

COMMONWEALTH OF KENTUCKY
CITY OF LONDON
ORDINANCE NO. 2020-17

AN ORDINANCE FINALLY ANNEXING
AN AREA OF PROPERTY IN THE RIGHT-OF-WAY OF INTERSTATE HIGHWAY 75, AN
AREA IN THE WEST CUMBERLAND GAP PARKWAY (HIGHWAY 25-E), AND AN
AREA IN KENTUCKY ROUTE 770, AND PRIVATE PROPERTY OWNED BY G&M OIL
COMPANY, INC. LOCATED AT THE INTERSECTION OF INTERSTATE 75 AND WEST
CUMBERLAND GAP PARKWAY

BE IT ORDAINED BY THE CITY OF LONDON, KENTUCKY AS FOLLOWS:

WHEREAS, the City of London, Kentucky has:

1. Held a First Reading on August 12, 2020, and passed on Second Reading on September 10, 2020, an Intent to Annex Ordinance designated as Ordinance No. 2020-10 for the area referenced above and described in such Ordinance.
2. Published said Intent to Annex Ordinance 2020-10 in the *Sentinel-Echo* on September 16, 2020.
3. Again Published said Intent to Annex Ordinance 2020-10 in the *Sentinel-Echo* on October 21, 2020.
4. Published notice of the opportunity to petition against said annexation pursuant to KRS 81A.420 in the *Sentinel-Echo* on October 28, 2020, and again on December 16, 2020.
5. Published notice in the *Sentinel-Echo* on December 16, 2020 of City Council Public Meetings on December 28 and 30, 2020 to consider Final Annex Ordinances on First and Second Readings on property subject to Intent to Annex Ordinance 2020-10 contingent on no timely and/or adequate petition being received pursuant to KRS 81A.420.
6. Received no timely and/or adequate petition addressed to the Mayor pursuant to KRS 81A.420 and the aforementioned newspaper notices requesting to place the within annexation on the ballot for vote.
7. Conducted a City Council Meeting by Zoom for First Reading on December 28, 2020 and for Second Reading on December 30, 2020 consistent with the above-referenced newspaper notices and by Video Teleconference consistent with KRS 61.826 and Kentucky Attorney General Opinion OAG 20-05 dated March 18, 2020
8. Determined that the area hereinafter described is desirable to be annexed, the same being in an unincorporated area accurately described below and accurately depicted on an annexation map prepared by Kentucky-licensed surveyor Stephen M. Flinchum of Kentucky Surveys, Inc., (the "Annexation Map"), which is incorporated herein by reference, and is adjacent and/or contiguous to the preexisting boundaries of the City of London, Kentucky as established by Ordinance 984.
9. The City Council finds that Tract 1 of this annexation, as depicted on the Annexation Map, is an involuntary annexation, in that such territory is in the Right-of-Way of Interstate Highway 75, the Right-of-Way of West Cumberland Gap Parkway (Highway 25-E); and the Right-of-Way of Kentucky Route 770. The City Council has no knowledge of opposition by the Commonwealth of Kentucky of any of these Right-of-Way properties, but must consider such annexations involuntary in the absence of written consent.
10. This matter is before the City Council of the City of London pursuant to a request by G&M Oil Company, Inc. that the property located at the intersection of Interstate 75 and

West Cumberland Gap Parkway (a/k/a Highway 25E) ("Tract 2" of the description below and of the Annexation Map) be annexed into the corporate city limits of the City of London, Kentucky.

11. The City Council finds that Tract 2 of this annexation is a voluntary annexation, being considered at the request and irrevocable written consent of the private property owner G&M Oil Company, Inc., being the sole owner of the property described herein.
12. As evidenced by the Annexation Map and the description below, Tract 1 is adjacent and/or contiguous to Tract 2 over approximately 2,250.23 feet (Lines 97-106 on Annexation Map).
13. The City Council, in compliance with KRS 81A.410(1)(b), finds the entire territory being annexed by reason of population density, commercial, industrial, institutional, or governmental use of land, or subdivision of land, is urban in character or suitable for development for urban purposes without unreasonable delay.
14. The City Council, based on the Annexation Map, finds the private property territory being annexed to be in the vicinity of the Exit 29 Interchange of Interstate Highway I-75.
15. The City Council, based on the Annexation Map, finds no part of the territory being annexed to be in an Agricultural District as the term is used in KRS 262.850.
16. The City Council, based on documents and correspondence of record, finds the territory being annexed has access to the following utility services: (a) Electric – Kentucky Utilities, London, KY; (b) Water – Corbin Utility Commission; (c) Sewer – Corbin Utility Commission; and (4) Gas – Delta Gas and a private well.
17. The City Council, based on photographic evidence or record, finds there is a traffic light governing entrance and exit from the territory being annexed to the West Cumberland Gap Parkway.
18. The City Council, based on photographic evidence of record, finds there is an operating truck stop on the south side of West Cumberland Gap Parkway directly across from the entrance to the property being annexed.
19. The City Council, based on the Annexation Map, and photographic evidence of record, finds there is a commercial truck stop structure on the property being annexed.
20. The City Council, based on photographic and documentary evidence of record, finds a truck stop business previously operated on the territory to be annexed. The City Council, based on the Annexation Map, and photographic evidence of record, finds a large portion of the territory being annexed is paved in the manner of a parking lot.
21. The City Council, based on the Annexation Map, and photographic evidence of record, finds there are numerous commercial businesses operating on properties in the vicinity of and to the east of the territory being annexed.
22. The City Council further finds that all of the foregoing adjudicative facts support annexation of the subject territory being in compliance with KRS 81A.410(1) as being urban in character or suitable for urban development purposes without unreasonable delay.
23. The City Council recognizes the property owner, by its authorized officer or agent, has represented of record that such territory has not been used for agricultural purposes for at least 52 years.
24. The City Council is aware of no evidence to indicate utility infrastructure owned by another city is in the territory being annexed.
25. This property is not in any other boundary of an incorporated city.

All of these above findings are in keeping with KRS 81A.410 and KRS 81A.412 and other applicable Kentucky law. For such reasons:

BE IT ORDAINED BY THE CITY OF LONDON, KENTUCKY AS FOLLOWS:

1. The highway right-of-way property described below and in the Annexation Map as Tract 1 is annexed into the City of London with all appropriate notice provided in compliance with KRS 81A.425. Said notice was sent to the property owner whose property is proposed to be annexed by first-class mail no later than FOURTEEN ("14") days PRIOR to the meeting at which the ordinance proposing the annexation received its SECOND READING. Per KRS 81A.425, the City Clerk certified the list of property owners to whom the notice was sent and the certified list was made a part of the official record of the meeting at which the ordinance proposing the annexation received its SECOND READING. Said notice included the time, date, and location of the meeting at which the proposed ordinance received its second reading, and a copy of the proposed ordinance.

2. The private property owner of the property described below and in the Annexation Map as Tract 2 is annexed into the City of London and its owner also received notice in the same manner as the owner of Tract 1. However, such notice is a courtesy in that such property owner has provided an irrevocable consent to annexation and, thus, no further notice was required as expressly recognized in KRS 81A.425(5).

3. The property being annexed is depicted on the Annexation Map and more particularly described as follows:

TRACT #1

A certain tract located approximately 0.56 mile south from Interstate Route #75, exit #38, and more particularly described as follows:

All hereinafter coordinates are referenced from Kentucky State Plane Coordinate System, South Zone, and referenced from the 1983 North American Datum. All hereinafter bearings and distances are referenced to the Kentucky State Plane Grid System.

BEGINNING at a five-eighths (5/8) inch iron pin with aluminum cap located in the east right-of-way line of Interstate Route #75, located 0.56 mile south from the approximate intersection of Interstate Route 75 and State Route #192, having a State Plane Coordinate of **1,924,650.64 NORTH** and **2,121,375.97 EAST**;

Thence, meandering with the east right-of-way lines of Interstate Route 75, the following bearings and distances;

SOUTH 05 DEGREES 03 MINUTES 16 SECONDS EAST 971.95 FEET; (L1)
SOUTH 06 DEGREES 08 MINUTES 09 SECONDS EAST 845.43 FEET; (L2)
SOUTH 08 DEGREES 38 MINUTES 13 SECONDS EAST 494.43 FEET; (L3)
SOUTH 02 DEGREES 55 MINUTES 16 SECONDS EAST 998.32 FEET; (L4)
SOUTH 05 DEGREES 32 MINUTES 58 SECONDS EAST 390.64 FEET; (L5)
SOUTH 05 DEGREES 48 MINUTES 02 SECONDS EAST 809.53 FEET; (L6)
SOUTH 04 DEGREES 35 MINUTES 20 SECONDS EAST 292.71 FEET; (L7)
SOUTH 04 DEGREES 29 MINUTES 32 SECONDS EAST 304.73 FEET, (L8) crossing
 State Route #363, to a right-of-way monument located in the east right-of-way line of Interstate Route #75, having a State Plane Coordinate of **1,919,566.29 NORTH** and **2,121,843.97 EAST**;

Thence, continuing to meander with the east right-of-way lines of Interstate Route #75, the following bearings and distances;

SOUTH 04 DEGREES 04 MINUTES 32 SECONDS WEST 202.75 FEET; (L9)
SOUTH 23 DEGREES 20 MINUTES 39 SECONDS EAST 108.35 FEET; (L10)
SOUTH 05 DEGREES 07 MINUTES 42 SECONDS EAST 765.45 FEET; (L11)
SOUTH 02 DEGREES 41 MINUTES 38 SECONDS EAST 1,140.14 FEET; (L12)
SOUTH 03 DEGREES 09 MINUTES 12 SECONDS EAST 1,804.42 FEET; (L13)
SOUTH 07 DEGREES 25 MINUTES 51 SECONDS WEST 296.66 FEET; (L14)
SOUTH 13 DEGREES 45 MINUTES 56 SECONDS EAST 359.32 FEET; (L15)
SOUTH 04 DEGREES 28 MINUTES 31 SECONDS EAST 147.73 FEET; (L16)
SOUTH 02 DEGREES 12 MINUTES 54 SECONDS WEST 199.05 FEET; (L17)

SOUTH 07 DEGREES 44 MINUTES 37 SECONDS EAST 514.34 FEET; (L18)
SOUTH 01 DEGREES 25 MINUTES 41 SECONDS EAST 300.47 FEET; (L19)
SOUTH 16 DEGREES 34 MINUTES 44 SECONDS EAST 110.03 FEET; (L20)
SOUTH 06 DEGREES 38 MINUTES 31 SECONDS WEST 370.81 FEET; (L21)
SOUTH 02 DEGREES 37 MINUTES 43 SECONDS EAST 507.47 FEET; (L22)
SOUTH 03 DEGREES 58 MINUTES 16 SECONDS EAST 267.81 FEET; (L23)
SOUTH 05 DEGREES 34 MINUTES 34 SECONDS EAST 466.14 FEET; (L24)
SOUTH 07 DEGREES 27 MINUTES 02 SECONDS EAST 190.78 FEET; (L25)
SOUTH 14 DEGREES 30 MINUTES 26 SECONDS EAST 461.77 FEET; (L26)
SOUTH 01 DEGREES 27 MINUTES 04 SECONDS WEST 301.53 FEET; (L27)
SOUTH 07 DEGREES 59 MINUTES 32 SECONDS EAST 590.11 FEET; (L28)
SOUTH 04 DEGREES 35 MINUTES 01 SECONDS EAST 627.71 FEET; (L29)
SOUTH 10 DEGREES 49 MINUTES 28 SECONDS EAST 274.36 FEET; (L30)
SOUTH 03 DEGREES 39 MINUTES 33 SECONDS EAST 348.95 FEET; (L31)
SOUTH 02 DEGREES 07 MINUTES 29 SECONDS WEST 399.99 FEET; (L32)
SOUTH 01 DEGREES 45 MINUTES 35 SECONDS WEST 230.09 FEET; (L33)
SOUTH 08 DEGREES 01 MINUTES 10 SECONDS EAST 360.42 FEET; (L34)
SOUTH 30 DEGREES 00 MINUTES 51 SECONDS WEST 166.19 FEET; (L35)
SOUTH 04 DEGREES 09 MINUTES 54 SECONDS WEST 342.69 FEET; (L36)
SOUTH 02 DEGREES 37 MINUTES 46 SECONDS WEST 305.37 FEET; (L37)
SOUTH 00 DEGREES 39 MINUTES 28 SECONDS WEST 500.04 FEET; (L38)
SOUTH 06 DEGREES 45 MINUTES 52 SECONDS WEST 303.95 FEET; (L39)
SOUTH 03 DEGREES 09 MINUTES 13 SECONDS WEST 1,422.47 FEET; (L40)
SOUTH 05 DEGREES 29 MINUTES 46 SECONDS WEST 71.66 FEET; (L41)
SOUTH 02 DEGREES 33 MINUTES 00 SECONDS WEST 197.25 FEET; (L42)
SOUTH 00 DEGREES 37 MINUTES 17 SECONDS EAST 276.80 FEET; (L43)
SOUTH 02 DEGREES 42 MINUTES 14 SECONDS EAST 320.26 FEET; (L44)
SOUTH 05 DEGREES 48 MINUTES 23 SECONDS EAST 178.85 FEET; (L45)
SOUTH 12 DEGREES 57 MINUTES 04 SECONDS EAST 549.77 FEET (L46) to a three and one-quarter (3.25) inch aluminum monument stamped "City of London Corporate Limits" located in the east right-of-way line of Interstate Route #75, having a State Plane Coordinate of 1,903,706.71 NORTH and 2,122,566.25 EAST;

Thence, continuing to meander with the east right-of-way lines of Interstate Route #75, the following bearings and distances;

SOUTH 42 DEGREES 46 MINUTES 42 SECONDS EAST 2,008.08 FEET; (L47)
SOUTH 44 DEGREES 38 MINUTES 40 SECONDS WEST 786.07 FEET (L48) crossing the Little Laurel River;
SOUTH 43 DEGREES 27 MINUTES 52 SECONDS WEST 468.05 FEET; (L49)
SOUTH 68 DEGREES 08 MINUTES 18 SECONDS WEST 198.93 FEET (L50) to a corner located in the east right-of-way line of Interstate Route #75;
SOUTH 01 DEGREES 13 MINUTES 24 SECONDS WEST 122.00 FEET; (L51)
SOUTH 20 DEGREES 30 MINUTES 48 SECONDS WEST 211.90 FEET; (L52)
SOUTH 02 DEGREES 18 MINUTES 51 SECONDS EAST 601.79 FEET; (L53)
SOUTH 01 DEGREES 43 MINUTES 24 SECONDS WEST 1,300.28 FEET; (L54)
SOUTH 00 DEGREES 33 MINUTES 48 SECONDS WEST 644.34 FEET; (L55)
SOUTH 03 DEGREES 48 MINUTES 37 SECONDS WEST 555.39 FEET; (L56)
SOUTH 07 DEGREES 08 MINUTES 55 SECONDS WEST 251.50 FEET; (L57)
SOUTH 12 DEGREES 27 MINUTES 36 SECONDS EAST 101.42 FEET; (L58)
SOUTH 01 DEGREES 27 MINUTES 12 SECONDS WEST 552.00 FEET; (L59)
SOUTH 04 DEGREES 47 MINUTES 11 SECONDS EAST 601.69 FEET; (L60)
SOUTH 16 DEGREES 56 MINUTES 02 SECONDS WEST 426.42 FEET; (L61)
SOUTH 01 DEGREES 20 MINUTES 40 SECONDS WEST 514.42 FEET; (L62)
SOUTH 12 DEGREES 30 MINUTES 44 SECONDS WEST 507.71 FEET; (L63)
SOUTH 17 DEGREES 21 MINUTES 02 SECONDS WEST 651.80 FEET; (L64)
SOUTH 17 DEGREES 06 MINUTES 37 SECONDS WEST 90.17 FEET, (L65) crossing State Route #552, to a right-of-way monument located in the east right-of-way line of Interstate Route #75, having a State Plane Coordinate of 1,894,213.67 NORTH and 2,122,295.80 EAST;

Thence, continuing to meander with the east right-of-way lines of Interstate Route #75, the following bearings and distances;

SOUTH 13 DEGREES 49 MINUTES 00 SECONDS WEST 971.56 FEET; (L66)
SOUTH 13 DEGREES 24 MINUTES 11 SECONDS WEST 628.71 FEET; (L67)
SOUTH 08 DEGREES 59 MINUTES 24 SECONDS EAST 148.01 FEET; (L68)
SOUTH 23 DEGREES 49 MINUTES 53 SECONDS WEST 301.41 FEET; (L69)
SOUTH 13 DEGREES 42 MINUTES 33 SECONDS WEST 293.42 FEET; (L70)
SOUTH 09 DEGREES 22 MINUTES 35 SECONDS WEST 416.65 FEET; (L71)
SOUTH 28 DEGREES 54 MINUTES 10 SECONDS WEST 161.82 FEET; (L72)
SOUTH 11 DEGREES 09 MINUTES 15 SECONDS WEST 490.15 FEET; (L73)
SOUTH 32 DEGREES 46 MINUTES 48 SECONDS WEST 105.62 FEET; (L74)
SOUTH 14 DEGREES 02 MINUTES 01 SECONDS WEST 247.72 FEET; (L75)
SOUTH 01 DEGREES 52 MINUTES 37 SECONDS WEST 100.11 FEET; (L76)
SOUTH 20 DEGREES 26 MINUTES 32 SECONDS WEST 202.55 FEET; (L77)
SOUTH 04 DEGREES 28 MINUTES 42 SECONDS EAST 168.95 FEET; (L78)
SOUTH 38 DEGREES 33 MINUTES 05 SECONDS WEST 153.65 FEET; (L79)
SOUTH 10 DEGREES 16 MINUTES 47 SECONDS WEST 810.81 FEET; (L80)
SOUTH 36 DEGREES 40 MINUTES 26 SECONDS WEST 108.03 FEET; (L81)
SOUTH 14 DEGREES 02 MINUTES 17 SECONDS WEST 304.16 FEET; (L82)
SOUTH 20 DEGREES 23 MINUTES 20 SECONDS WEST 101.90 FEET; (L83)
SOUTH 13 DEGREES 59 MINUTES 03 SECONDS WEST 693.42 FEET; (L84)
SOUTH 08 DEGREES 50 MINUTES 14 SECONDS WEST 237.73 FEET (L85) to a corner
 located at the intersection of the east right-of-way line of Interstate Route #75 and the
 approximate centerline of Laurel River, having a State Plane Coordinate of **1,887,827.65**
NORTH and 2,120,712.51 EAST;

Thence, continuing to meander with the east right-of-way lines of Interstate Route #75, the following bearings and distances;

SOUTH 14 DEGREES 23 MINUTES 22 SECONDS WEST 162.09 FEET; (L86)
SOUTH 22 DEGREES 46 MINUTES 31 SECONDS WEST 151.36 FEET; (L87)
SOUTH 14 DEGREES 11 MINUTES 50 SECONDS WEST 658.08 FEET; (L88)
SOUTH 08 DEGREES 32 MINUTES 10 SECONDS WEST 295.43 FEET; (L89)
SOUTH 13 DEGREES 54 MINUTES 00 SECONDS WEST 503.21 FEET; (L90)
SOUTH 05 DEGREES 43 MINUTES 33 SECONDS WEST 396.28 FEET; (L91)
SOUTH 07 DEGREES 31 MINUTES 24 SECONDS WEST 442.04 FEET; (L92)
SOUTH 08 DEGREES 34 MINUTES 51 SECONDS WEST 3051.75 FEET; (L93)
SOUTH 01 DEGREES 58 MINUTES 02 SECONDS EAST 305.10 FEET; (L94)
SOUTH 14 DEGREES 50 MINUTES 32 SECONDS WEST 301.85 FEET; (L95)
SOUTH 07 DEGREES 53 MINUTES 46 SECONDS WEST 804.24 FEET; (L96) to a three
 and one-quarter (3.25) inch aluminum monument stamped "City of London Corporate Limits"
 located in the east right-of-way line of Interstate Route #75 and being the beginning corner of the
 proposed annexation TRACT #2, having a State Plane Coordinate of **1,880,869.04 NORTH** and
2,119,557.42 EAST;

Thence, continuing to meander with the east right-of-way lines of Interstate Route #75, and with the west boundary lines of the proposed annexation TRACT #2, the following bearings and distances;

SOUTH 08 DEGREES 55 MINUTES 53 SECONDS WEST 748.52 FEET; (L97)
SOUTH 03 DEGREES 48 MINUTES 20 SECONDS EAST 384.38 FEET; (L98)
SOUTH 13 DEGREES 13 MINUTES 06 SECONDS EAST 308.83 FEET; (L99)
SOUTH 05 DEGREES 11 MINUTES 00 SECONDS EAST 287.66 FEET; (L100)
SOUTH 10 DEGREES 09 MINUTES 29 SECONDS EAST 159.18 FEET; (L101)
SOUTH 21 DEGREES 40 MINUTES 55 SECONDS EAST 58.63 FEET; (L102)
SOUTH 48 DEGREES 44 MINUTES 01 SECONDS EAST 132.17 FEET (L103) to a three
 and one-quarter (3.25) inch aluminum monument stamped "City of London Corporate Limits"
 located at the intersection of the east right-of-way line of Interstate Route 75 and the north right-
 of-way line of West Cumberland Gap Parkway, having a State Plane Coordinate of **1,878,860.59**
NORTH and 2,119,712.41 EAST;

Thence, meandering with the north right-of-way lines of West Cumberland Gap Parkway, the following bearings and distances;

SOUTH 74 DEGREES 17 MINUTES 40 SECONDS EAST 234.45 FEET; (L104)
SOUTH 71 DEGREES 56 MINUTES 32 SECONDS EAST 187.58 FEET; (L105)
NORTH 47 DEGREES 46 MINUTES 13 SECONDS EAST 53.81 FEET; (L106)

Thence, leaving the proposed annexation TRACT #2 and continuing to meander with the north right-of-way lines of West Cumberland Gap Parkway, the following bearings and distances;

SOUTH 77 DEGREES 53 MINUTES 04 SECONDS EAST 143.35 FEET; (L107)
SOUTH 54 DEGREES 06 MINUTES 28 SECONDS EAST 93.75 FEET; (L108)
SOUTH 83 DEGREES 27 MINUTES 45 SECONDS EAST 82.95 FEET; (L109)
SOUTH 75 DEGREES 35 MINUTES 49 SECONDS EAST 363.20 FEET; (L110)
SOUTH 74 DEGREES 45 MINUTES 03 SECONDS EAST 631.98 FEET; (L111)
SOUTH 77 DEGREES 16 MINUTES 42 SECONDS EAST 136.73 FEET; (L112)
SOUTH 68 DEGREES 44 MINUTES 03 SECONDS EAST 222.22 FEET; (L113)
SOUTH 63 DEGREES 26 MINUTES 54 SECONDS EAST 330.67 FEET; (L114)
SOUTH 68 DEGREES 42 MINUTES 55 SECONDS EAST 2064.65 FEET; (L115)
SOUTH 76 DEGREES 49 MINUTES 43 SECONDS EAST 134.63 FEET; (L116)
SOUTH 57 DEGREES 57 MINUTES 48 SECONDS EAST 115.44 FEET; (L117)
SOUTH 68 DEGREES 56 MINUTES 37 SECONDS EAST 516.56 FEET; (L118)
SOUTH 76 DEGREES 32 MINUTES 56 SECONDS EAST 248.91 FEET, (L119) crossing
 State Route #3431, to a corner located in the north right-of-way line of West Cumberland Gap Parkway;

SOUTH 69 DEGREES 31 MINUTES 30 SECONDS EAST 467.08 FEET; (L120)
SOUTH 59 DEGREES 11 MINUTES 04 SECONDS EAST 301.91 FEET; (L121)
SOUTH 55 DEGREES 29 MINUTES 13 SECONDS EAST 348.69 FEET; (L122)
SOUTH 43 DEGREES 18 MINUTES 43 SECONDS EAST 378.19 FEET; (L123)
SOUTH 48 DEGREES 17 MINUTES 17 SECONDS EAST 292.55 FEET; (L124)
SOUTH 39 DEGREES 59 MINUTES 33 SECONDS EAST 89.84 FEET; (L125)
SOUTH 39 DEGREES 17 MINUTES 39 SECONDS EAST 579.90 FEET; (L126)
SOUTH 51 DEGREES 25 MINUTES 30 SECONDS EAST 299.74 FEET, (L127) crossing
 U. S. Route #25, to a three and one-quarter (3.25) inch aluminum monument stamped "City of London Corporate Limits" located in the north right-of-way line of West Cumberland Gap Parkway, having a State Plane Coordinate of 1,875,390.71 NORTH and 2,127,050.82 EAST;

Thence, crossing East Cumberland Gap Parkway, **SOUTH 65 DEGREES 12 MINUTES 32 SECONDS WEST 374.19 FEET (L128)** to a three and one-quarter (3.25) inch aluminum monument stamped "City of London Corporate Limits" located in the south right-of-way line of East Cumberland Gap Parkway, having a State Plane Coordinate of 1,875,233.81 NORTH and 2,126,711.12 EAST;

Thence, meandering with the south right-of-way lines of East Cumberland Gap Parkway, the following bearings and distances;

NORTH 39 DEGREES 23 MINUTES 24 SECONDS WEST 294.76 FEET, (L129) crossing
 U.S. Route #25 to a corner located in the south right-of-way line of West Cumberland Gap Parkway;

NORTH 32 DEGREES 43 MINUTES 06 SECONDS WEST 119.01 FEET; (L130)
NORTH 46 DEGREES 08 MINUTES 22 SECONDS WEST 367.15 FEET; (L131)
NORTH 40 DEGREES 57 MINUTES 29 SECONDS WEST 529.70 FEET; (L132)
NORTH 49 DEGREES 25 MINUTES 52 SECONDS WEST 521.95 FEET; (L133)
NORTH 71 DEGREES 55 MINUTES 12 SECONDS WEST 241.64 FEET; (L134)
NORTH 65 DEGREES 42 MINUTES 08 SECONDS WEST 571.91 FEET, (L135) crossing
 State Route #3431, to a corner located in the south right-of-way line of West Cumberland Gap Parkway;

NORTH 66 DEGREES 47 MINUTES 22 SECONDS WEST 533.01 FEET; (L136)
NORTH 76 DEGREES 13 MINUTES 42 SECONDS WEST 239.55 FEET; (L137)
NORTH 60 DEGREES 38 MINUTES 43 SECONDS WEST 171.30 FEET; (L138)
NORTH 69 DEGREES 03 MINUTES 46 SECONDS WEST 971.36 FEET; (L139)
NORTH 66 DEGREES 36 MINUTES 54 SECONDS WEST 211.15 FEET; (L140)
NORTH 69 DEGREES 14 MINUTES 10 SECONDS WEST 495.31 FEET (L141) to a fence
 post corner located in the south right-of-way line of West Cumberland Gap Parkway, having a State Plane Coordinate of 1,877,823.52 NORTH and 2,122,264.33 EAST;

Thence, continuing to meander with the south right-of-way lines of West Cumberland Gap Parkway, the following bearings and distances;

NORTH 68 DEGREES 13 MINUTES 18 SECONDS WEST 465.68 FEET; (L142)
NORTH 70 DEGREES 48 MINUTES 27 SECONDS WEST 355.31 FEET; (L143)

NORTH 72 DEGREES 44 MINUTES 27 SECONDS WEST 168.38 FEET; (L144)
NORTH 62 DEGREES 05 MINUTES 40 SECONDS WEST 225.34 FEET; (L145)
NORTH 74 DEGREES 11 MINUTES 29 SECONDS WEST 580.95 FEET; (L146)
NORTH 80 DEGREES 15 MINUTES 20 SECONDS WEST 278.91 FEET; (L147)
NORTH 83 DEGREES 55 MINUTES 57 SECONDS WEST 120.13 FEET; (L148)
NORTH 75 DEGREES 39 MINUTES 49 SECONDS WEST 379.92 FEET; (L149)
NORTH 76 DEGREES 20 MINUTES 39 SECONDS WEST 191.24 FEET (L150) to a fence post corner located at the intersection of the south right-of-way line of West Cumberland Gap Parkway and the east right-of-way line of Interstate Route #75, having a State Plane Coordinate of **1,878,625.92 NORTH** and **2,119,629.14 EAST**;

Thence, meandering with the east right-of-way lines of Interstate Route #75, the following bearings and distances;

SOUTH 27 DEGREES 39 MINUTES 56 SECONDS WEST 208.95 FEET; (L151)
SOUTH 39 DEGREES 05 MINUTES 05 SECONDS WEST 173.02 FEET; (L152)
SOUTH 29 DEGREES 21 MINUTES 26 SECONDS WEST 215.08 FEET; (L153)
SOUTH 09 DEGREES 32 MINUTES 16 SECONDS WEST 651.08 FEET (L154) to a three and one-quarter (3.25) inch aluminum monument stamped "City of London Corporate Limits" located in the east right-of-way line of Interstate Route 75, having a State Plane Coordinate of **1,877,477.03 NORTH** and **2,119,209.72 EAST**;

Thence, crossing Interstate Route #75, **NORTH 76 DEGREES 46 MINUTES 38 SECONDS WEST 320.95 FEET (L155)** to a three and one-quarter (3.25) inch aluminum monument stamped "City of London Corporate Limits" located in the west right-of-way line of Interstate Route #75, having a State Plane Coordinate of **1,877,550.44 NORTH** and **2,118,897.28 EAST**;

Thence, meandering with the west right-of-way lines of Interstate Route #75, the following bearings and distances;

NORTH 01 DEGREES 57 MINUTES 23 SECONDS EAST 398.65 FEET; (L156)
NORTH 13 DEGREES 33 MINUTES 57 SECONDS WEST 942.51 FEET (L157) to a corner located at the intersection of the west right-of-way line of Interstate Route #75 and the south right-of-way line of State Route #770;

Thence, meandering with the south right-of-way lines of State Route #770, the following bearings and distances;

NORTH 75 DEGREES 43 MINUTES 20 SECONDS WEST 541.04 FEET; (L158)
 A CURVE to the LEFT having an ARC LENGTH of 1015.31 FEET, a RADIUS of 680.00 FEET, a CHORD BEARING and DISTANCE of **SOUTH 36 DEGREES 48 MINUTES 45 SECONDS WEST 923.59 FEET; (C1)**
SOUTH 89 DEGREES 00 MINUTES 10 SECONDS WEST 103.26 FEET (L159) crossing East City Dam Road, to a corner located in the south right-of-way line of State Route #770;
NORTH 54 DEGREES 34 MINUTES 06 SECONDS WEST 47.72 FEET; (L160)
SOUTH 37 DEGREES 19 MINUTES 12 SECONDS WEST 316.73 FEET; (L161)
SOUTH 54 DEGREES 45 MINUTES 30 SECONDS WEST 242.96 FEET; (L162)
SOUTH 69 DEGREES 03 MINUTES 42 SECONDS WEST 272.30 FEET; (L163)
SOUTH 89 DEGREES 10 MINUTES 30 SECONDS WEST 421.13 FEET; (L164)
NORTH 89 DEGREES 24 MINUTES 47 SECONDS WEST 288.08 FEET (L165) to a corner located at the approximate intersection of the south right-of-way line of State Route #770 and the approximate centerline of Laurel River, having a State Plane Coordinate of **1,877,792.43 NORTH** and **2,116,116.01 EAST**;

Thence, crossing State Route #770 and with the approximate centerline of Laurel River, **NORTH 00 DEGREES 35 MINUTES 13 SECONDS EAST 288.00 FEET (L166)** to a corner located at the approximate intersection of the north right-of-way line of State Route #770 and the approximate centerline of Laurel River, having a State Plane Coordinate of **1,878,080.42 NORTH** and **2,116,118.96 EAST**;

Thence, continuing with the north right-of-way lines of State Route #770, the following bearings and distances;

SOUTH 89 DEGREES 38 MINUTES 03 SECONDS EAST 337.47 FEET; (L167)
SOUTH 88 DEGREES 09 MINUTES 56 SECONDS EAST 331.74 FEET; (L168)
NORTH 77 DEGREES 32 MINUTES 29 SECONDS EAST 97.06 FEET; (L169)

NORTH 66 DEGREES 58 MINUTES 18 SECONDS EAST 119.93 FEET; (L170)
 NORTH 54 DEGREES 04 MINUTES 12 SECONDS EAST 112.27 FEET; (L171)
 NORTH 42 DEGREES 14 MINUTES 57 SECONDS EAST 118.47 FEET; (L172)
 NORTH 35 DEGREES 30 MINUTES 49 SECONDS EAST 183.90 FEET; (L173)
 NORTH 37 DEGREES 28 MINUTES 45 SECONDS EAST 360.76 FEET; (L174)
 NORTH 37 DEGREES 42 MINUTES 36 SECONDS EAST 230.79 FEET; (L175)
 NORTH 41 DEGREES 13 MINUTES 00 SECONDS EAST 57.57 FEET; (L176)
 NORTH 49 DEGREES 36 MINUTES 17 SECONDS EAST 98.17 FEET; (L177)
 NORTH 71 DEGREES 15 MINUTES 31 SECONDS EAST 229.06 FEET; (L178)
 NORTH 73 DEGREES 49 MINUTES 15 SECONDS EAST 131.09 FEET; (L179)
 NORTH 83 DEGREES 24 MINUTES 03 SECONDS EAST 122.99 FEET; (L180)
 NORTH 14 DEGREES 44 MINUTES 19 SECONDS EAST 38.14 FEET; (L181)
 SOUTH 67 DEGREES 56 MINUTES 06 SECONDS EAST 78.78 FEET; (L182)
 NORTH 73 DEGREES 09 MINUTES 58 SECONDS EAST 26.24 FEET; (L183)
 SOUTH 78 DEGREES 17 MINUTES 27 SECONDS EAST 237.40 FEET; (L184)
 SOUTH 79 DEGREES 05 MINUTES 21 SECONDS EAST 175.94 FEET (L185) to a one
 and one-half (1 ½) inch metal pipe located at the intersection of the north right-of-way line of
 State Route #770 and the west right-of-way line of Interstate Route #75, having a State Plane
 Coordinate of 1,879,072.22 NORTH and 2,118,721.93 EAST;

Thence, meandering with the west right-of-way lines of Interstate Route #75, the following bearings and distances;

NORTH 27 DEGREES 11 MINUTES 15 SECONDS EAST 613.39 FEET; (L186)
 NORTH 10 DEGREES 23 MINUTES 06 SECONDS EAST 343.25 FEET; (L187)
 NORTH 14 DEGREES 08 MINUTES 45 SECONDS EAST 363.14 FEET; (L188)
 NORTH 06 DEGREES 31 MINUTES 28 SECONDS EAST 332.27 FEET; (L189)
 NORTH 13 DEGREES 29 MINUTES 39 SECONDS EAST 152.25 FEET; (L190)
 NORTH 00 DEGREES 51 MINUTES 16 SECONDS EAST 402.32 FEET; (L191)
 NORTH 08 DEGREES 13 MINUTES 26 SECONDS EAST 646.71 FEET; (L192)
 NORTH 13 DEGREES 17 MINUTES 05 SECONDS EAST 349.73 FEET; (L193)
 NORTH 07 DEGREES 54 MINUTES 48 SECONDS EAST 514.33 FEET; (L194)
 NORTH 10 DEGREES 37 MINUTES 11 SECONDS WEST 176.04 FEET; (L195)
 NORTH 02 DEGREES 34 MINUTES 57 SECONDS EAST 215.42 FEET; (L196)
 NORTH 08 DEGREES 06 MINUTES 42 SECONDS EAST 58.82 FEET; (L197)
 NORTH 27 DEGREES 03 MINUTES 41 SECONDS EAST 209.28 FEET; (L198)
 NORTH 08 DEGREES 24 MINUTES 55 SECONDS EAST 2139.98 FEET; (L199)
 NORTH 07 DEGREES 36 MINUTES 37 SECONDS EAST 1090.55 FEET; (L200)
 NORTH 08 DEGREES 50 MINUTES 41 SECONDS EAST 385.05 FEET; (L201)
 NORTH 21 DEGREES 12 MINUTES 23 SECONDS EAST 403.34 FEET; (L202)
 NORTH 13 DEGREES 52 MINUTES 59 SECONDS EAST 303.77 FEET; (L203)
 NORTH 07 DEGREES 06 MINUTES 49 SECONDS EAST 420.67 FEET (L204) to a corner
 located at the approximate centerline of the Laurel River and in west right-of-way line of
 Interstate Route #75, having a State Plane Coordinate of 1,887,977.42 NORTH and
 2,120,344.24 EAST;

Thence, continuing to meander with the west right-of-way lines of Interstate Route #75, the following bearings and distances;

NORTH 14 DEGREES 11 MINUTES 34 SECONDS EAST 278.28 FEET; (L205)
 NORTH 20 DEGREES 20 MINUTES 34 SECONDS EAST 402.03 FEET; (L206)
 NORTH 13 DEGREES 58 MINUTES 15 SECONDS EAST 497.63 FEET; (L207)
 NORTH 08 DEGREES 03 MINUTES 48 SECONDS EAST 202.13 FEET; (L208)
 NORTH 19 DEGREES 51 MINUTES 00 SECONDS EAST 202.64 FEET; (L209)
 NORTH 14 DEGREES 17 MINUTES 05 SECONDS EAST 552.56 FEET; (L210)
 NORTH 00 DEGREES 29 MINUTES 25 SECONDS WEST 204.26 FEET; (L211)
 NORTH 37 DEGREES 20 MINUTES 31 SECONDS EAST 162.32 FEET; (L212)
 NORTH 14 DEGREES 29 MINUTES 36 SECONDS EAST 497.16 FEET; (L213)
 NORTH 09 DEGREES 54 MINUTES 24 SECONDS WEST 304.15 FEET; (L214)
 NORTH 35 DEGREES 28 MINUTES 22 SECONDS EAST 342.91 FEET; (L215)
 NORTH 13 DEGREES 47 MINUTES 22 SECONDS EAST 399.52 FEET; (L216)
 NORTH 04 DEGREES 54 MINUTES 51 SECONDS EAST 605.16 FEET; (L217)
 NORTH 27 DEGREES 38 MINUTES 49 SECONDS EAST 414.40 FEET; (L218)
 NORTH 13 DEGREES 12 MINUTES 44 SECONDS EAST 496.21 FEET; (L219)

NORTH 14 DEGREES 07 MINUTES 04 SECONDS EAST 1104.38 FEET (L220) to a right-of-way monument located in the west right-of-way line of Interstate Route #75, having a State Plane Coordinate of 1,894,338.89 NORTH and 2,121,995.81 EAST;

Thence, continuing to meander with the west right-of-way lines of Interstate Route #75, the following bearings and distances;

NORTH 13 DEGREES 01 MINUTES 12 SECONDS EAST 114.79 FEET (L221) crossing State Route #552 to a point located in west right-of-way line of Interstate Route #75;
NORTH 14 DEGREES 04 MINUTES 49 SECONDS EAST 75.83 FEET; (L222)
NORTH 08 DEGREES 33 MINUTES 57 SECONDS WEST 402.84 FEET; (L223)
NORTH 17 DEGREES 08 MINUTES 34 SECONDS EAST 308.62 FEET; (L224)
NORTH 11 DEGREES 24 MINUTES 58 SECONDS WEST 379.26 FEET; (L225)
NORTH 13 DEGREES 29 MINUTES 53 SECONDS EAST 472.49 FEET; (L226)
NORTH 07 DEGREES 12 MINUTES 17 SECONDS WEST 721.78 FEET; (L227)
NORTH 04 DEGREES 00 MINUTES 19 SECONDS EAST 358.45 FEET; (L228)
NORTH 01 DEGREES 43 MINUTES 46 SECONDS EAST 671.37 FEET; (L229)
NORTH 05 DEGREES 48 MINUTES 29 SECONDS EAST 583.52 FEET; (L230)
NORTH 03 DEGREES 59 MINUTES 22 SECONDS EAST 335.86 FEET; (L231)
NORTH 06 DEGREES 41 MINUTES 58 SECONDS EAST 589.83 FEET; (L232)
NORTH 06 DEGREES 33 MINUTES 31 SECONDS EAST 1007.50 FEET; (L233)
NORTH 04 DEGREES 29 MINUTES 56 SECONDS EAST 870.86 FEET (L234) to a corner located at the approximate intersection of the west right-of-way line of Interstate Route #75 and the centerline of Little Laurel River;

Thence, continuing with the west right-of-way lines of Interstate Route #75 and meandering with the approximate centerline of Little Laurel River, the following bearings and distances;

SOUTH 79 DEGREES 37 MINUTES 59 SECONDS WEST 63.26 FEET; (L235)
NORTH 57 DEGREES 40 MINUTES 36 SECONDS WEST 25.69 FEET; (L236)
NORTH 18 DEGREES 52 MINUTES 08 SECONDS WEST 58.05 FEET; (L237)
NORTH 16 DEGREES 48 MINUTES 34 SECONDS EAST 52.98 FEET; (L238)
NORTH 07 DEGREES 14 MINUTES 52 SECONDS EAST 65.39 FEET; (L239)
NORTH 20 DEGREES 12 MINUTES 38 SECONDS EAST 71.63 FEET; (L240)
NORTH 41 DEGREES 36 MINUTES 43 SECONDS EAST 56.79 FEET; (L241)
NORTH 29 DEGREES 17 MINUTES 29 SECONDS EAST 77.08 FEET; (L242)
NORTH 05 DEGREES 47 MINUTES 18 SECONDS EAST 81.79 FEET; (L243)
NORTH 00 DEGREES 22 MINUTES 59 SECONDS WEST 211.67 FEET; (L244)
NORTH 21 DEGREES 22 MINUTES 41 SECONDS WEST 122.85 FEET; (L245)
NORTH 62 DEGREES 36 MINUTES 16 SECONDS WEST 148.66 FEET; (L246)
NORTH 64 DEGREES 11 MINUTES 13 SECONDS WEST 78.55 FEET (L247) to a corner located at the approximate intersection of the centerlines of Little Laurel River and Ward Branch;

Thence, continuing with the west right-of-way lines of Interstate Route #75 and meandering with the approximate centerline of Ward Branch, the following bearings and distances;

NORTH 09 DEGREES 27 MINUTES 19 SECONDS EAST 107.61 FEET; (L248)
NORTH 16 DEGREES 22 MINUTES 40 SECONDS WEST 83.59 FEET; (L249)
NORTH 48 DEGREES 47 MINUTES 33 SECONDS WEST 87.72 FEET; (L250)
NORTH 19 DEGREES 02 MINUTES 39 SECONDS WEST 68.62 FEET; (L251)
NORTH 19 DEGREES 58 MINUTES 09 SECONDS EAST 55.21 FEET; (L252)
NORTH 28 DEGREES 27 MINUTES 21 SECONDS EAST 79.14 FEET; (L253)
NORTH 10 DEGREES 42 MINUTES 18 SECONDS EAST 44.41 FEET; (L254)
NORTH 53 DEGREES 49 MINUTES 16 SECONDS WEST 75.92 FEET; (L255)
NORTH 80 DEGREES 41 MINUTES 21 SECONDS WEST 212.04 FEET; (L256)
NORTH 64 DEGREES 43 MINUTES 25 SECONDS WEST 185.06 FEET; (L257)
NORTH 54 DEGREES 59 MINUTES 12 SECONDS WEST 195.45 FEET; (L258)
NORTH 09 DEGREES 27 MINUTES 19 SECONDS EAST 92.08 FEET; (L259)
NORTH 52 DEGREES 34 MINUTES 25 SECONDS EAST 107.94 FEET; (L260)
SOUTH 89 DEGREES 22 MINUTES 12 SECONDS EAST 152.95 FEET; (L261)
NORTH 79 DEGREES 17 MINUTES 05 SECONDS EAST 110.47 FEET; (L262)
NORTH 50 DEGREES 35 MINUTES 10 SECONDS EAST 128.46 FEET; (L263)
NORTH 05 DEGREES 40 MINUTES 46 SECONDS WEST 139.47 FEET; (L264)
NORTH 65 DEGREES 27 MINUTES 03 SECONDS WEST 104.23 FEET; (L265)

NORTH 48 DEGREES 34 MINUTES 19 SECONDS WEST 176.95 FEET; (L266)
 NORTH 39 DEGREES 35 MINUTES 21 SECONDS WEST 90.85 FEET; (L267)
 NORTH 05 DEGREES 01 MINUTES 13 SECONDS WEST 110.26 FEET; (L268)
 NORTH 17 DEGREES 27 MINUTES 44 SECONDS EAST 68.33 FEET; (L269)
 NORTH 36 DEGREES 41 MINUTES 54 SECONDS EAST 183.66 FEET; (L270)
 NORTH 11 DEGREES 47 MINUTES 37 SECONDS WEST 82.62 FEET; (L271)
 NORTH 25 DEGREES 13 MINUTES 25 SECONDS EAST 93.40 FEET; (L272)
 NORTH 03 DEGREES 02 MINUTES 14 SECONDS WEST 136.59 FEET; (L273)
 NORTH 15 DEGREES 30 MINUTES 38 SECONDS WEST 55.49 FEET; (L274)
 NORTH 90 DEGREES 00 MINUTES 00 SECONDS WEST 43.42 FEET; (L275)
 SOUTH 50 DEGREES 10 MINUTES 23 SECONDS WEST 56.54 FEET; (L276)
 SOUTH 29 DEGREES 50 MINUTES 25 SECONDS WEST 75.14 FEET; (L277)
 SOUTH 22 DEGREES 58 MINUTES 23 SECONDS WEST 86.53 FEET; (L278)
 SOUTH 66 DEGREES 16 MINUTES 52 SECONDS WEST 54.01 FEET; (L279)
 NORTH 76 DEGREES 16 MINUTES 58 SECONDS WEST 50.90 FEET; (L280)
 NORTH 54 DEGREES 26 MINUTES 30 SECONDS WEST 72.65 FEET; (L281)
 NORTH 28 DEGREES 40 MINUTES 04 SECONDS WEST 72.91 FEET; (L282)
 NORTH 01 DEGREES 14 MINUTES 40 SECONDS WEST 111.07 FEET; (L283)
 NORTH 12 DEGREES 44 MINUTES 26 SECONDS WEST 169.54 FEET; (L284)
 NORTH 03 DEGREES 34 MINUTES 25 SECONDS EAST 96.75 FEET; (L285)
 NORTH 21 DEGREES 58 MINUTES 33 SECONDS WEST 67.68 FEET; (L286)
 NORTH 39 DEGREES 27 MINUTES 04 SECONDS WEST 53.15 FEET; (L287)
 NORTH 70 DEGREES 48 MINUTES 26 SECONDS WEST 29.37 FEET; (L288)
 SOUTH 51 DEGREES 19 MINUTES 08 SECONDS WEST 30.90 FEET; (L289)
 SOUTH 25 DEGREES 19 MINUTES 46 SECONDS WEST 50.75 FEET; (L290)
 SOUTH 09 DEGREES 17 MINUTES 11 SECONDS WEST 67.27 FEET; (L291)
 SOUTH 32 DEGREES 10 MINUTES 34 SECONDS WEST 38.50 FEET; (L292)
 NORTH 79 DEGREES 06 MINUTES 24 SECONDS WEST 31.93 FEET; (L293)
 NORTH 48 DEGREES 47 MINUTES 32 SECONDS WEST 25.65 FEET; (L294)
 NORTH 28 DEGREES 09 MINUTES 38 SECONDS WEST 38.33 FEET; (L295)
 NORTH 09 DEGREES 27 MINUTES 19 SECONDS WEST 66.08 FEET; (L296)
 NORTH 01 DEGREES 19 MINUTES 52 SECONDS EAST 103.83 FEET; (L970)
 NORTH 08 DEGREES 36 MINUTES 33 SECONDS WEST 40.29 FEET; (L298)
 NORTH 19 DEGREES 33 MINUTES 34 SECONDS EAST 57.64 FEET; (L299)
 NORTH 14 DEGREES 01 MINUTES 33 SECONDS WEST 29.86 FEET; (L300)
 NORTH 42 DEGREES 22 MINUTES 33 SECONDS WEST 37.58 FEET; (L301)
 NORTH 01 DEGREES 47 MINUTES 19 SECONDS EAST 38.64 FEET; (L302)

Thence, leaving Ward Branch and continuing to meander with the west right-of-way lines of Interstate Route #75, the following bearings and distances;

NORTH 68 DEGREES 02 MINUTES 09 SECONDS EAST 865.84 FEET; (L303)
 NORTH 31 DEGREES 42 MINUTES 03 SECONDS EAST 155.72 FEET (L304) to an iron
 pin #2776, located in the west right-of-way line of Interstate Route #75, having a State Plane
 Coordinate of 1,905,181.00 NORTH and 2,122,073.27 EAST;

Thence, continuing to meander with the west right-of-way lines of Interstate Route #75, the following bearings and distances;

NORTH 06 DEGREES 27 MINUTES 41 SECONDS EAST 831.76 FEET; (L305)
 NORTH 03 DEGREES 05 MINUTES 42 SECONDS EAST 2020.29 FEET; (L306)
 NORTH 01 DEGREES 49 MINUTES 56 SECONDS WEST 253.95 FEET; (L307)
 NORTH 08 DEGREES 24 MINUTES 20 SECONDS EAST 251.34 FEET; (L308)
 NORTH 02 DEGREES 50 MINUTES 34 SECONDS EAST 597.40 FEET; (L309)
 NORTH 00 DEGREES 05 MINUTES 32 SECONDS WEST 161.05 FEET; (L310)
 NORTH 01 DEGREES 13 MINUTES 32 SECONDS WEST 157.04 FEET; (L311)
 NORTH 03 DEGREES 45 MINUTES 25 SECONDS WEST 188.04 FEET; (L312)
 NORTH 06 DEGREES 05 MINUTES 43 SECONDS WEST 333.74 FEET; (L313)
 NORTH 07 DEGREES 34 MINUTES 32 SECONDS WEST 1158.21 FEET; (L314)
 NORTH 16 DEGREES 51 MINUTES 51 SECONDS WEST 298.03 FEET; (L315)
 NORTH 06 DEGREES 35 MINUTES 32 SECONDS WEST 102.80 FEET; (L316)
 NORTH 02 DEGREES 00 MINUTES 51 SECONDS WEST 363.12 FEET; (L317)
 NORTH 07 DEGREES 25 MINUTES 45 SECONDS WEST 456.43 FEET; (L318)
 NORTH 04 DEGREES 15 MINUTES 44 SECONDS WEST 452.71 FEET; (L319)

NORTH 01 DEGREES 52 MINUTES 21 SECONDS WEST 534.22 FEET; (L320)
NORTH 17 DEGREES 58 MINUTES 50 SECONDS WEST 278.31 FEET; (L321)
NORTH 09 DEGREES 29 MINUTES 25 SECONDS EAST 324.10 FEET; (L322)
NORTH 03 DEGREES 08 MINUTES 54 SECONDS WEST 986.14 FEET; (L323)
NORTH 01 DEGREES 52 MINUTES 02 SECONDS WEST 607.48 FEET; (L324)
NORTH 02 DEGREES 47 MINUTES 38 SECONDS WEST 1885.88 FEET; (L325)
NORTH 03 DEGREES 39 MINUTES 00 SECONDS WEST 958.07 FEET; (L326)
NORTH 04 DEGREES 43 MINUTES 50 SECONDS WEST 783.34 FEET (L327) to a fence
 post corner located in west right-of-way line of Interstate Route #75, having a State Plane
 Coordinate of **1,919,094.42 NORTH** and **2,121,585.05 EAST;**

Thence, continuing to meander with the west right-of-way lines of Interstate Route #75, the
 following bearings and distances;

NORTH 04 DEGREES 58 MINUTES 28 SECONDS WEST 757.36 FEET (L328) crossing
 State Route #363 to a point located in west right-of-way line of Interstate Route #75;
NORTH 15 DEGREES 21 MINUTES 56 SECONDS WEST 168.14 FEET; (L329)
NORTH 03 DEGREES 11 MINUTES 58 SECONDS WEST 814.15 FEET; (L330)
NORTH 07 DEGREES 09 MINUTES 56 SECONDS WEST 166.06 FEET; (L331)
NORTH 05 DEGREES 35 MINUTES 51 SECONDS WEST 1498.21 FEET; (L332)
NORTH 01 DEGREES 15 MINUTES 40 SECONDS WEST 633.89 FEET; (L333)
NORTH 05 DEGREES 03 MINUTES 11 SECONDS WEST 663.66 FEET; (L334)
NORTH 06 DEGREES 12 MINUTES 31 SECONDS WEST 818.46 FEET (L335) to a three
 and one-quarter (3.25) inch aluminum monument stamped "City of London Corporate Limits",
 located in the west right-of-way line of Interstate Route #75, having a State Plane Coordinate of
1,924,588.23 NORTH and **2,121,101.63 EAST;**

Thence, crossing Interstate Route #75, **NORTH 77 DEGREES 11 MINUTES 01 SECONDS**
EAST 281.35 FEET (L336) to the corner of the **BEGINNING** containing **548.74 ACRES** more
 or less, by calculation. This city annexation description was prepared from survey plat maps,
 highway right-of-way plans, GPS field data and information provided by the City of London,
 Kentucky, dated April 07, 2020, by Kentucky Surveys, Inc., Stephen M. Flinchum, Licensed
 Professional Surveyor #4119.

TRACT #2

A certain tract located at the intersection of Interstate Route #75 and West Cumberland Gap
 Parkway, and more particularly described as follows:

All hereinafter coordinates are referenced from Kentucky State Plane Coordinate System,
 South Zone, and referenced from the 1983 North American Datum. All hereinafter
 bearings and distances are referenced to the Kentucky State Plane Grid System.

BEGINNING at a three and one-quarter (3.25) inch aluminum monument stamped "City of
 London Corporate Limits", located approximately 0.39 mile north from the intersection of
 Interstate Route #75 and West Cumberland Gap Parkway, in the east right-of-way line of
 Interstate Route #75, having a State Plane Coordinate of **1,880,869.04 NORTH**, and
2,119,557.42 EAST; Said monument also being a corner of the proposed annexation **TRACT #1;**

Thence, with the east right-of-way lines of Interstate Route #75 and the proposed annexation
TRACT #1, the following bearings and distances;

SOUTH 08 DEGREES 55 MINUTES 53 SECONDS WEST 748.52 FEET; (L97)
SOUTH 03 DEGREES 48 MINUTES 20 SECONDS EAST 384.38 FEET; (L98)
SOUTH 13 DEGREES 13 MINUTES 06 SECONDS EAST 308.83 FEET; (L99)
SOUTH 05 DEGREES 11 MINUTES 00 SECONDS EAST 287.66 FEET; (L100)
SOUTH 10 DEGREES 09 MINUTES 29 SECONDS EAST 159.18 FEET; (L101)
SOUTH 21 DEGREES 40 MINUTES 55 SECONDS EAST 58.63 FEET; (L102)
SOUTH 48 DEGREES 44 MINUTES 01 SECONDS EAST 132.17 FEET (L103)
 to a three and one-quarter (3.25) inch aluminum monument stamped "City of London Corporate
 Limits" having a State Plane Coordinate of **1,878,860.59 NORTH**, and **2,119,712.41 EAST;**

Thence, leaving the east right-of-way line of Interstate Route #75, with the proposed annexation TRACT #1 and meandering with the north right-of-way lines of West Cumberland Gap Parkway, the following bearings and distances;

SOUTH 74 DEGREES 17 MINUTES 40 SECONDS EAST 234.45 FEET; (L104)
SOUTH 71 DEGREES 56 MINUTES 32 SECONDS EAST 187.58 FEET; (L105)
NORTH 47 DEGREES 46 MINUTES 13 SECONDS EAST 53.81 FEET; (L106)
SOUTH 77 DEGREES 53 MINUTES 04 SECONDS EAST 19.55 FEET; (L337)

Thence, leaving the north right-of-way line of West Cumberland Gap Parkway, and the proposed annexation TRACT #1 and with the G & M Oil Company, Inc. property boundary lines, the following bearings and distances;

NORTH 49 DEGREES 26 MINUTES 24 SECONDS EAST 120.01 FEET; (L338)
NORTH 49 DEGREES 37 MINUTES 01 SECONDS EAST 701.36 FEET; (L339)
SOUTH 45 DEGREES 47 MINUTES 31 SECONDS EAST 275.26 FEET; (L340)
NORTH 42 DEGREES 47 MINUTES 28 SECONDS EAST 572.51 FEET; (L341)
NORTH 45 DEGREES 24 MINUTES 08 SECONDS WEST 56.82 FEET; (L342)
NORTH 42 DEGREES 38 MINUTES 55 SECONDS WEST 93.24 FEET; (L343)
NORTH 43 DEGREES 35 MINUTES 10 SECONDS WEST 82.37 FEET; (L344)
NORTH 43 DEGREES 09 MINUTES 16 SECONDS WEST 142.30 FEET; (L345)
NORTH 44 DEGREES 02 MINUTES 58 SECONDS WEST 146.98 FEET; (L346)
NORTH 53 DEGREES 42 MINUTES 19 SECONDS EAST 190.15 FEET; (L347)
NORTH 51 DEGREES 48 MINUTES 13 SECONDS EAST 585.81 FEET; (L348)
NORTH 49 DEGREES 51 MINUTES 48 SECONDS EAST 329.29 FEET (L349) to a corner
 located in the west right-of-way line of State Route #1223;

Thence, with the west right-of-way line of State Route #1223, **NORTH 25 DEGREES 18 MINUTES 14 SECONDS WEST 37.58 FEET (L350)** to an iron pin with plastic cap stamped #3276, having a State Plane Coordinate of 1,880,630.32 NORTH, and 2,121,876.44 EAST;

Thence, leaving the west right-of-way line of State Route #1223 and continuing with the G & M Oil Company, Inc. property boundary lines, the following bearings and distances;

NORTH 72 DEGREES 02 MINUTES 10 SECONDS WEST 186.61 FEET; (L351)
NORTH 69 DEGREES 36 MINUTES 36 SECONDS WEST 177.56 FEET; (L352)
NORTH 67 DEGREES 55 MINUTES 21 SECONDS WEST 177.85 FEET; (L353)
NORTH 65 DEGREES 08 MINUTES 21 SECONDS WEST 220.15 FEET; (L354)
NORTH 64 DEGREES 03 MINUTES 53 SECONDS WEST 345.05 FEET; (L355)
NORTH 56 DEGREES 06 MINUTES 07 SECONDS WEST 329.60 FEET; (L356)
NORTH 53 DEGREES 23 MINUTES 18 SECONDS WEST 166.08 FEET; (L357)
NORTH 76 DEGREES 35 MINUTES 51 SECONDS WEST 182.43 FEET; (L358)
NORTH 87 DEGREES 19 MINUTES 12 SECONDS WEST 122.91 FEET; (L359)
NORTH 76 DEGREES 26 MINUTES 18 SECONDS WEST 164.64 FEET; (L360)
SOUTH 24 DEGREES 29 MINUTES 06 SECONDS WEST 533.00 FEET; (L361)
SOUTH 70 DEGREES 25 MINUTES 15 SECONDS WEST 225.15 FEET (L362) to the
 corner of the **BEGINNING** containing **91.00 ACRES** more or less, by calculation. This city annexation description was prepared from survey plat maps, highway right-of-way plans, record deeds, GPS field data and information provided by the City of London, Kentucky, dated April 07, 2020, by Kentucky Surveys, Inc., Stephen M. Flinchum, Licensed Professional Surveyor #4119.

26. This Final Annex Ordinance and the various parts thereof are hereby declared to be severable. If any section, clause, sentence, or phrase of this Intent to Annex Ordinance is held to be invalid or unconstitutional by any court of competent jurisdiction, then said holding shall not affect the validity of the ordinance as a whole, or any portion thereof other than the section so declared to be unconstitutional or invalid.

27. This Final Annex Ordinance shall become effective immediately upon second reading and publication. All Ordinances or parts of Ordinances in conflict herewith are hereby repealed.

A Motion to approve the aforementioned Ordinance was made by Councilperson Bobby Joe Parman, and seconded by Councilperson Daniel Carmack on **First Reading on December 28,**

2020 at a duly called and noticed meeting of the City Council. The following Members of the City Council voted in favor of such Ordinance: Steve Berry, Bobby Joe Parman, Daniel Carmack, Danny Phelps, Judson Weaver and Noah White, and the following Members of the City Council, if any, voted against said Ordinance: None.

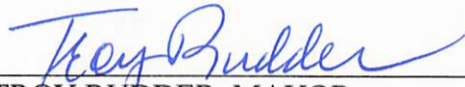
A Motion to approve the aforementioned Ordinance was made by Councilperson Daniel Carmack and seconded by Councilperson Danny Phelps on **Second Reading on December 30, 2020** at a duly called and noticed meeting of the City Council. The following Members of the City Council voted in favor of such Ordinance: Steve Berry, Daniel Carmack, Danny Phelps, Judson Weaver, and Noah White, and the following Members of the City Council, if any, voted against said Ordinance: None.

FIRST READING – December 28, 2020


SECOND READING – December 30, 2020

PUBLICATION: January 6, 2021

IN WITNESS WHERE, the foregoing Final Annexation Ordinance was passed as specified above.



TROY RUDDER, MAYOR
CITY OF LONDON, KENTUCKY
DATE: December 30, 2020

ATTEST: 

CAROLYN ADAMS, CITY CLERK
CITY OF LONDON, KENTUCKY
DATE: 12-30-2020

MAP OF UTILITIES & EASEMENTS CITY OF LONDON COUNTY OF LAUREL COMMONWEALTH OF KENTUCKY

NOTES:

1. THE BEARING DECLINATION IS REFERENCED FROM THE KENTUCKY STATE PLANE COORDINATE SYSTEM (NAD 83 SOUTH ZONE).
2. THE ILLUSTRATED TWELVE (12) INCH WATER LINE IS SHOWN IN TWO PLACES ON THIS MAP. THE ILLUSTRATED TWELVE (12) INCH WATER LINE COULD BE LOCATED AT EITHER OF THESE PLACES OR BOTH.
3. THE ILLUSTRATED TRACTS ARE DEPICTED IN ACCORDANCE WITH INFORMATION FROM RECORDS OF THE CITY OF LONDON, KENTUCKY, AND THE RECORDS OF THE COUNTY OF LAUREL, KENTUCKY. THE ILLUSTRATED TRACTS ARE MAPPED FROM THE LOCATION OF THE EXISTING INTERSTATE 75 RIGHT-OF-WAY FENCE AND EXISTING FIRE HYDRANT VALVES AND WATERLINE MARKERS OF THE CITY OF LONDON, KENTUCKY. RECORDS IN DEED BOOK 389, PAGE 436, DEED BOOK 388, PAGE 115 AND DEED BOOK 389, PAGE 436, DESCRIBE AS BEING LOCATED WEST OF THE RIGHT-OF-WAY FENCE. HOWEVER, THE LOCATION OF THE EXISTING WATERLINE AND HOWEVER, THE LOCATION THAT IT WAS MIGHT BE ON THE EAST SIDE OF SAID FENCE.
4. THIS MAP OF UTILITIES & EASEMENTS WAS PREPARED IN ORDER TO ILLUSTRATE THE LOCATION OF UTILITIES & EASEMENTS TO THE CITY OF LONDON, KENTUCKY, AND TO ILLUSTRATE THE LOCATION OF WATER LINES BASED ON A COMBINATION OF RECORDS OF THE CITY OF LONDON, KENTUCKY, AND RECORDS OF THE COUNTY OF LAUREL, KENTUCKY, WHERE AVAILABLE.
5. THIS MAP IDENTIFIES CERTAIN EASEMENTS GRANTED TO THE CITY OF LONDON, KENTUCKY. HOWEVER, IT DOES NOT IDENTIFY THE OWNERSHIP OF WATER OR OTHER UTILITY LINES.

LEGEND

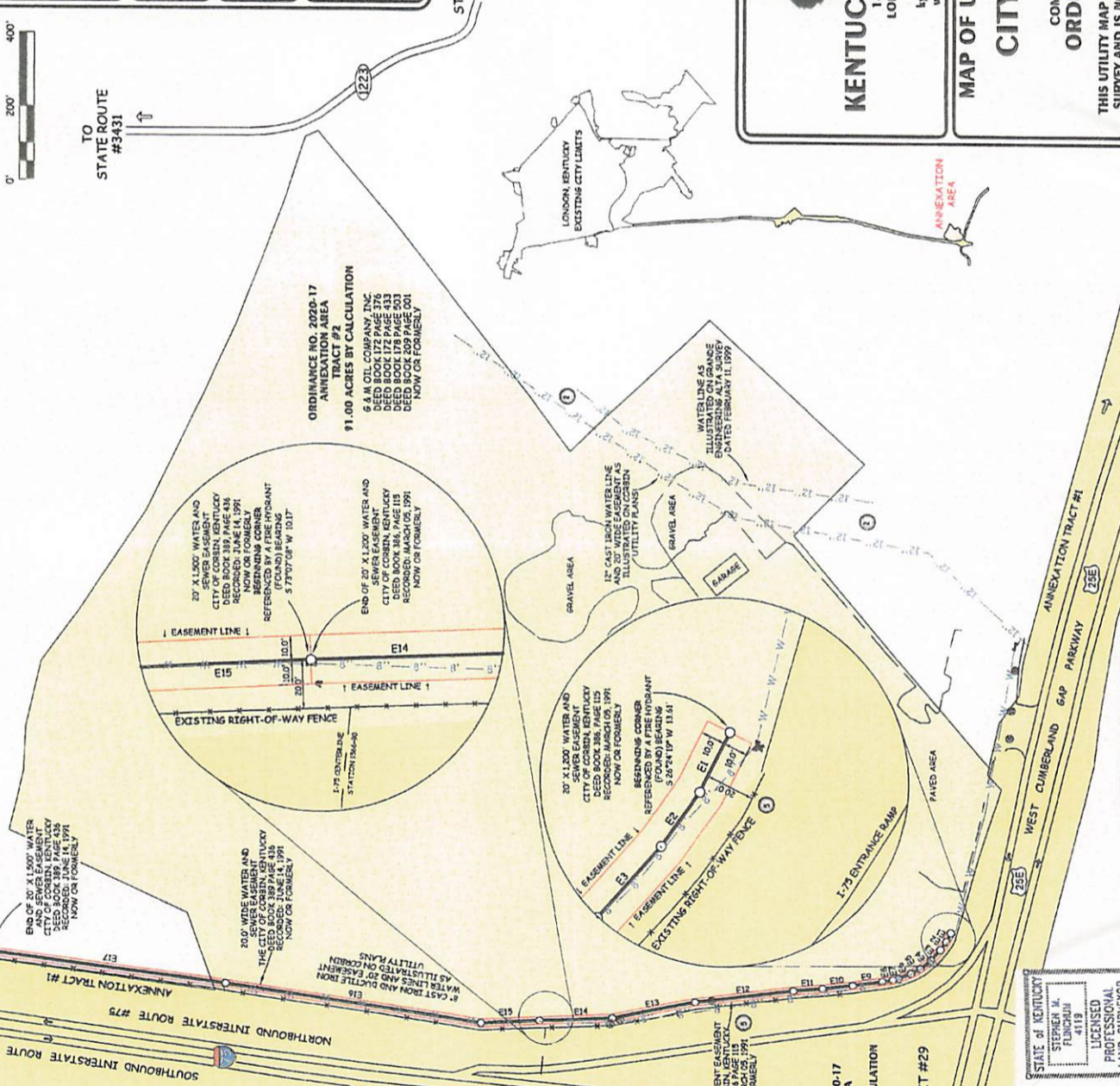
- EASEMENT CENTERLINE MEANDER CORNER
- SANITARY SEWER MANHOLE (FOUND)
- EXISTING FIRE HYDRANT (FOUND)
- EXISTING WATER VALVE (FOUND)
- WATER LINE (FOUND)
- 8" WATER LINE FROM MAPPING (NOT LOCATED)
- 12" WATER LINE FROM MAPPING (NOT LOCATED)
- EXISTING RIGHT-OF-WAY FENCE (FOUND)
- CORPORATE CITY LIMITS
- EASEMENT CENTERLINE
- 200' WIDE EASEMENT BOUNDARY LINE
- CITY ANNEXATION AREA
- ORDINANCE 2020-17

20' WIDE WATER LINE
THE CITY OF LONDON, KENTUCKY
DEED BOOK 389 PAGE 115
CENTERLINE BEARINGS AND DISTANCES

LINE	BEARING	DISTANCE
E1	N 43° 31' 52" W	17.73
E2	N 84° 31' 15" W	17.08
E3	N 89° 15' 05" W	16.68
E4	N 28° 29' 53" W	18.84
E5	N 20° 25' 05" W	17.44
E6	N 102° 55' 05" W	18.08
E7	N 102° 55' 05" W	18.08
E8	N 08° 02' 48" W	16.70
E9	N 05° 41' 24" W	12.11
E10	N 05° 41' 24" W	12.11
E11	N 07° 20' 20" W	12.81
E12	N 11° 15' 14" W	12.73
E13	N 11° 15' 14" W	12.73
E14	N 02° 15' 31" W	19.73

20' WIDE PERMANENT EASEMENT
THE CITY OF LONDON, KENTUCKY
DEED BOOK 389 PAGE 115
CENTERLINE BEARINGS AND DISTANCES

LINE	BEARING	DISTANCE
E15	N 02° 45' 45" W	10.17
E16	N 02° 45' 45" W	10.17
E17	N 07° 31' 07" E	140.31



VICINITY MAP
CORBIN QUADRANGLE
LAUREL COUNTY, KENTUCKY
NO SCALE

DRAWN BY: S. FLINCHUM
CHECKED BY: C. J. FELTUS
PERMITS: 259-0001
UTILITIES & EASEMENT MAP IS TO ILLUSTRATE THE EXISTING WATER AND SEWER EASEMENTS CONFERRED TO THE CITY OF CORBIN, KENTUCKY. RECORDED IN DEED BOOK 388, PAGE 115 AND DEED BOOK 389, PAGE 436.

SCALE:
1 INCH = 200 FEET
SHEET
1 of 1
DRAWING
2012/08 AUGUST 17-19 ANNEXA
3-27-2020 6 A.M. OIL.dwg
TIAUSIIZ CITY OF LONDON.crd

LONDON
CITY HALL
501 SOUTH MAIN STREET
LONDON, KENTUCKY 40741
606-864-4169
WEB SITE: www.londonky.gov

KENTUCKY SURVEYS, INC.
1802 McDONALD'S LANE
LONDON, KENTUCKY 40741
606-864-5472
kysurvey@windstream.net
www.kentuckysurvey.com

MAP OF UTILITIES & EASEMENTS
CITY OF LONDON
COUNTY OF LAUREL
COMMONWEALTH OF KENTUCKY
ORDINANCE #2020-17
THIS UTILITY MAP DOES NOT REPRESENT A BOUNDARY SURVEY AND IS NOT INTENDED FOR LAND TRANSFER.

STATE OF KENTUCKY
STEPHEN H. FLINCHUM
PLUMBER
4119
LICENSED PROFESSIONAL
LAND SURVEYOR

CERTIFICATION
THE ILLUSTRATED MAP OF UTILITIES & EASEMENTS WAS PREPARED FROM EXISTING RECORDED EASEMENTS, SURVEY PLAT MAPS, HIGHWAY RIGHT-OF-WAY PLANS, GPS FIELD DATA AND MAPS PROVIDED FROM CORBIN UTILITIES.
April 09, 2021
DATE
STEPHEN H. FLINCHUM
PLUMBER
4119