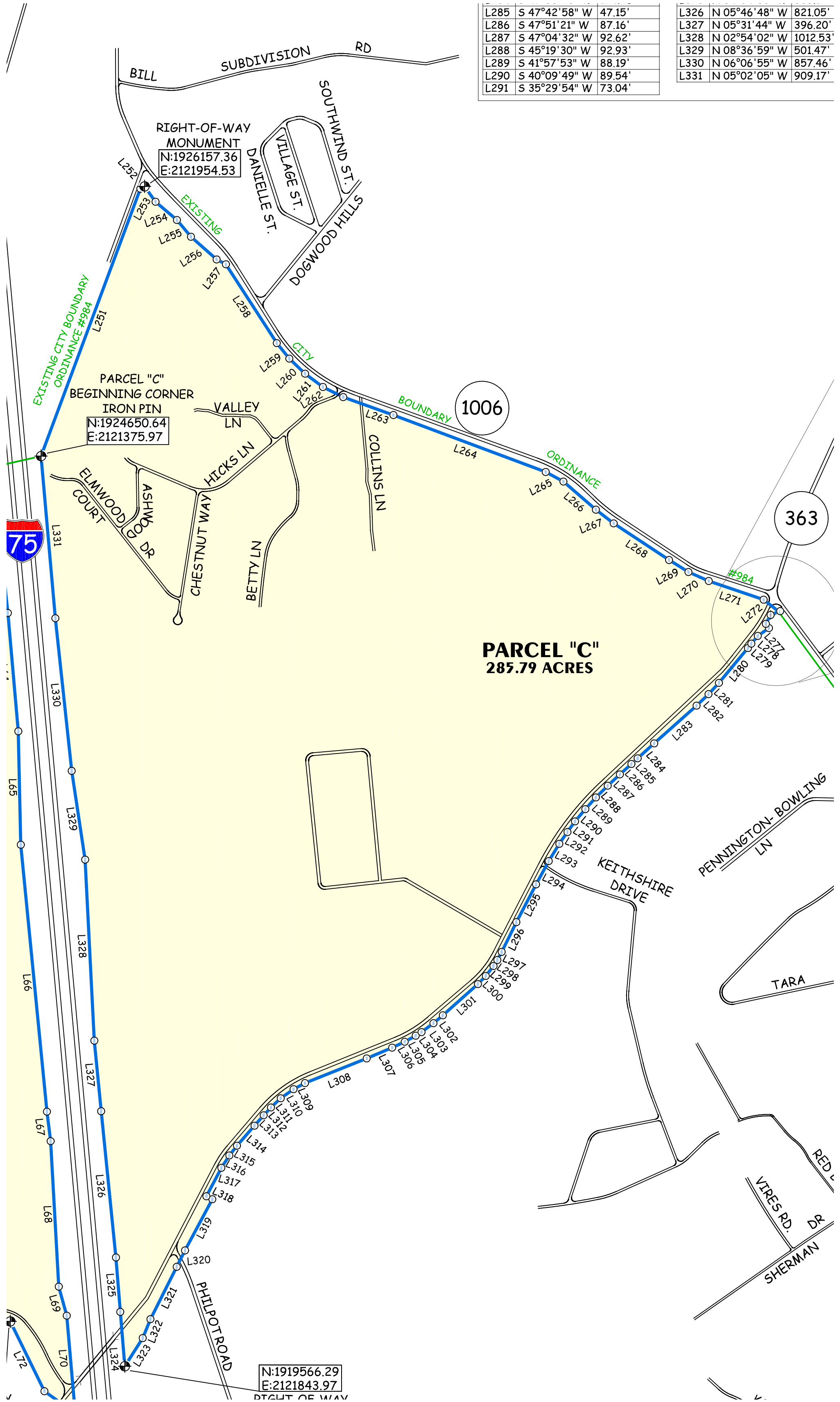


L285	S 47°42'58" W	47.15'
L286	S 47°51'21" W	87.16'
L287	S 47°04'32" W	92.62'
L288	S 45°19'30" W	92.93'
L289	S 41°57'53" W	88.19'
L290	S 40°09'49" W	89.54'
L291	S 35°29'54" W	73.04'

L326	N 05°46'48" W	821.05'
L327	N 05°31'44" W	396.20'
L328	N 02°54'02" W	1012.53'
L329	N 08°36'59" W	501.47'
L330	N 06°06'55" W	857.46'
L331	N 05°02'05" W	909.17'



PARCEL "C"
285.79 ACRES

N:1919566.29
E:2121843.97
RIGHT OF WAY